



Hawk Close, Beck Row, Suffolk, IP28 8EZ

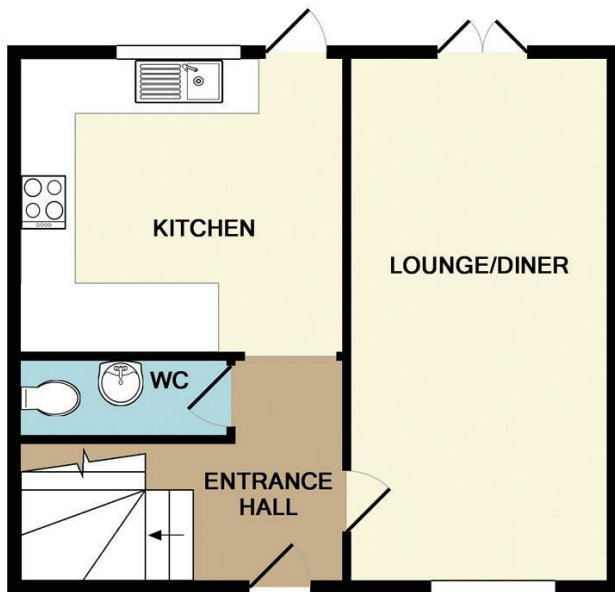
Rent - £1,150 PCM Deposit - £1,326

A modern 3 bedroom semi detached house situated close to USAF Mildenhall & Lakenheath. The house has a large lounge/dining area, a modern bathroom and a separate WC. There is an enclosed rear garden with voff road parking to the front.

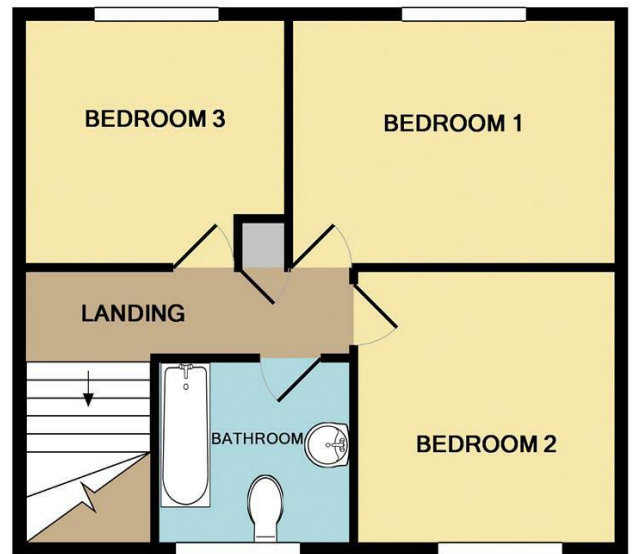
- MODERN SEMI DETACHED HOUSE
- 3 GOOD SIZE BEDROOMS
- LARGE LOUNGE / DINING AREA
- FAMILY BATHROOM & CLOAKROOM
- ENCLOSED GARDEN & PARKING
- CLOSE TO RAF BASES
- OIL HEATING & ENERGY RATING - C
- APPROXIMATE SIZE - 845 SQ FT
- PETS CONSIDERED / COUNCIL TAX BAND - B
- CALL SHIRES TO VIEW!



Council Tax Band: B - EPC Rating: C 71



GROUND FLOOR
APPROX. FLOOR
AREA 422 SQ.FT.
(39.2 SQ.M.)



1ST FLOOR
APPROX. FLOOR
AREA 424 SQ.FT.
(39.4 SQ.M.)

TOTAL APPROX. FLOOR AREA 845 SQ.FT. (78.5 SQ.M.)

Whilst every attempt has been made to ensure the accuracy of the floor plan contained here, measurements of doors, windows, rooms and any other items are approximate and no responsibility is taken for any error, omission, or mis-statement. This plan is for illustrative purposes only and should be used as such by any prospective purchaser. The services, systems and appliances shown have not been tested and no guarantee as to their operability or efficiency can be given

Made with Metropix ©2019

